

EUROPEAN QUALITY FROM ITALY



Language Learning
Interpreting Languages
Classroom management
Interaction with students
Communication Audio
Video/audio Streaming
Pair/Group activities
and Round Table
Digital recorder (also in home version)
Quizzes & Exams
Voice Synthesis (Text-to-Speech)
On-line activity assignment with dedicated VPN
Use of learning content on "CLOUD" folders
LIFETIME LICENSES (No annual fee)
Usable with external IDL audio network
(Hardware)



HI-TECH

NIBELUNG
Software Language Lab

IDL A.A. & IDL A.A.C.
Hardware Language Labs

Headphones & Furniture



+39.392.9385337



sales@lainlab.com



Statuto, 6 bis
12100, Cuneo, ITALY

NIBELUNG

Software Solution for teaching in PC Classroom

NIBELUNG Language Laboratory is designed to effectively use class time for engaging lessons with latest multimedia teaching content.

We provide **Upgrades** and **Lifetime Technical Support** for free

NIBELUNG on TABLETS

brings all the advantages of mobility and portability into feature-packed multimedia laboratory.

All features can be used in wireless LAN environment to create **wireless language lab**.

- Communication in pairs and groups
- Tests, quizzes and exercises
- Audio and video streaming
- Multimedia Recorder
- Screen transfer
- White board

NPW

Nibelung Power Watch

- Standalone software for classroom tablets
- Battery health and status monitoring
- Supports Android OS

INTERPRETER TRAINING

NIBELUNG is perfectly suited for the use in the interpreter training laboratory. It allows students to practice simultaneous, consecutive and distance interpreting.

- Audio source recording
- Student voice recording
- Bookmarks and subtitles
- Two-track player and Recorder (Source+Student)
- Several sessions simultaneously

ACTIVITIES

- Reading
- Self-access
- Listening
- Discussion
- Chat to selected group
- Voice record with AudioGraph
- Imitation of Phone Conversation
- Work with files prepared by teacher
- Homework formation, distribution and collection
- Web-browsing as a mode in which Internet browsers are run on the students' PCs according to teacher's commands
- Live screen transfer from teacher or any student

Combine methods to **individualise** learning and **increase** effectivity of lessons with the wide range of activities

INTERACTION WITH STUDENTS

ONE WAY LISTENING

spy listening of student's microphone

TALK

with selected student, group or whole class

RECORD

recording student's speech

RECORD CONVERSATIONS

recording conversations between teacher and students or between two students, etc.

PROGRAM LAUNCH

for selected group or for whole class

MESSAGE EXCHANGING

between teacher and students

FILE TRANSFER

for selected group or for whole class

BROADCAST SCREEN

with microphone of teacher's PC or selected student's PC

WHITE BOARD

colaborative drawing, use images, shapes and text

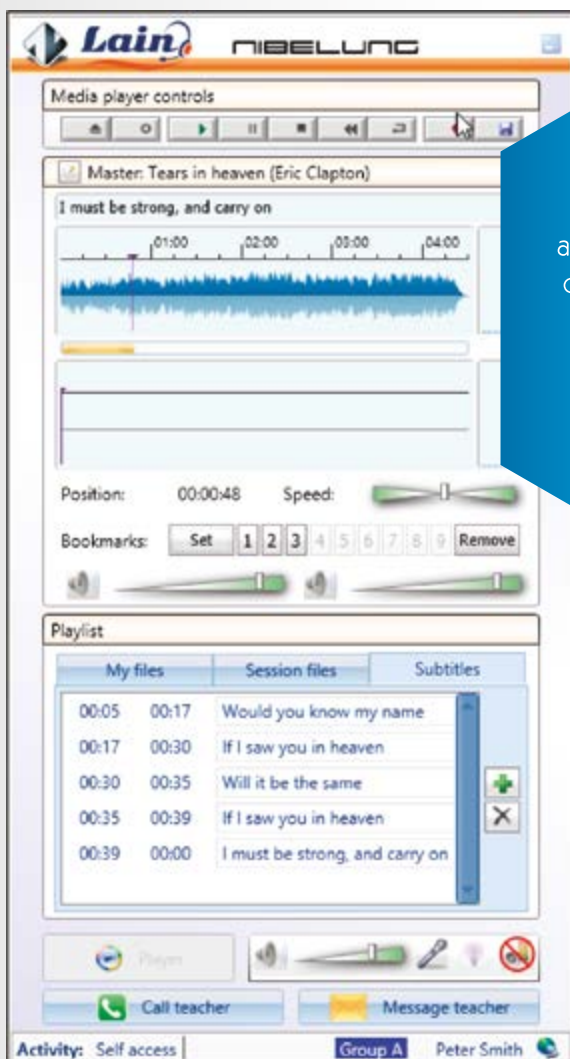


Main Module

MEDIA SOURCES

NIBELUNG Language Lab allows to use **up to 10 independent audio/video sources** simultaneously: **to 10 different groups**

- teacher's microphone
- student's microphone
- audio files
- audio CDs
- sound cards
- video files
- live video
- YouTube



Student's Module

MULTIMEDIA RECORDER

Feature-rich multimedia recorder allows students **to listen** or **to view** content and **to record** their voices at the same time.

Recordings from the master track can be played for comparison and better understanding **the correct pronunciation.**

NIBELUNG is the software solution which turns PC classroom into multimedia laboratory.

It doesn't require IT skills and any teacher can easily:

- manage PC classroom
- transfer audio
- stream video data
- use various files and webpages as teaching materials

COMPUTER MANAGEMENT

- Full remote control with student's webcams
- Screen thumbnails
- Screen view autoscan for student, group or whole class
- Launch control (supporting white/black lists)
- Internet access control
- Removable devices access control
- Remote power control

Built-in application **Quiz System** is convenient and easy way **to create great looking quizzes and exercises** with different question styles and possibility of voice answer

QUIZ SYSTEM

- **Single and Multiply Answers**
- **Fill in the Gaps**
insertion of missing words
- **Sequence**
put answers in specified order
- **Matching Pairs**
setting two tables in proper relation
- **Open Answer**
text area for answering quiz question
- **Drag and Drop**
arrange right text answers on relevant areas of picture
- **Hot spot**
choose areas of picture as an answer of question

IDL is a professional product, specially designed to reproduce high quality audio signals, fundamental when carrying out language learning activities.

IDL

**Hardware Language Lab
creating
the ideal surrounds
for communication**

IDL Hardware Language Lab provides intercommunication in real time between students and with the teacher at any time during any activity. The teacher can take actions on any student, real time is intended with no delay both in Video and Audio, only an hardware system can warranty this «Real Time».



IDL is flexible and modular allowing the upgrade and expansion from **Audio Active** to **Audio Active Comparative** and also to audio visual by adding an external video network without wasting any part purchased.

IDL represents a real breakthrough in terms of both professionalism and high fidelity audio. MEASURABLE tangible value that makes IDL a worldwide market leader in its sector.

IDL Audio Active

IDL A.A. offers a diverse and complete choice of functions. It is designed to enhance oral communication and allows simple linguistic exercises, reproducing typical everyday situations. The completely graphical interface makes IDL a simple and immediate tool from the first use and lesson with the class.

- Requires the only PC - on teacher's workstation
- Users require **no technical or IT skills**
- Highly user friendly, ensuring constant **total control** over classes and class activities
- Suitable for highly **intensive use**
- **Zero maintenance required** by educational staff
- An effective work tool as it imposes **no specific operating conditions** on the trainer

TEACHING ACTIVITIES:

- **Listening** to an audio source, listening and comprehension exercises
- **Talking / Speaking** with or without recording in the teacher master position (one at a time)
- **Oral examination** with or without recording in the teacher position (one at a time)
- **Using the video network (optional)** listening and watching an external video source: DVD, Satellite, teacher's PC, etc.

SIMPLE AND EFFECTIVE COMMUNICATION

- Teacher's communication with one student, a group or the whole class simultaneously
- Intercom, the teacher enables bidirectional communication with the selected student
- Transfer to a group or the whole class, the communication between teacher and one student, teacher and a pair of students
- Teacher as a moderator in all the conferencing activities
- Student Call, with time delay list of each call received
- Discrete listening of the selected student, independently from the activity he/she is performing
- Automatic discrete listening for one group or the whole class, auto scan with changeable scanning time

DIVERSIFIED WORK:

- Group creation of **up to four groups** with as many students as needed for each group
- Simultaneous and differentiated use of four activities in the four groups
- Each activity and/or function is possible for a single student or a group of selected students with a single command or mouse click
- Manual audio **pairs creation**, automatic creation of sequential audio pairs, automatic creation of random audio pairs
- **Group conferencing** in which the teacher can act as moderator at any time
- Creation of a free group, for **independent activities**, outside the standard working groups
- **Student's voice as a source** for the rest of the class



MARK ASSIGNATION

IDL allows the teacher to assign students' marks and comments; the data for each class register can be saved easily and the data can be accessed or printed at any time. This way the teacher can log lab sessions in the form of student attendance, student activities, and marks and comments assigned.



BOOST
your students'
language skills
with IDL



Multi-User Classroom Software Control in IDL and IDL Digital Labs

Via the **Graphical User Interface** the teacher has complete control of student's audio panel regardless of the activities type.

Description for each function you are about to start will be shown automatically, even the less experienced can use immediately the laboratory.

- Personalized and automatic access to the main laboratory software control through **USB Pen Drive** which basically has two functions:
 - recognises automatically the current teacher when inserted in USB connector;
 - allows teacher to move all the exams and activities performed in the lab for home correction
- Class loading with the **real classroom layout** and **information** such as student name, number, group, mark, etc.
- **Switch On/Off** for all student's panels
- Immediate and automatic saving of the student **marks** and **attendance**
- **Drag and Drop** facility allows to start automatically any activity with the selected students. Special area «**Applications**» contain all the files ready for sending.
- Teacher can create four groups for work with four analog external sources and one group (independent from the rest) for to manage digitalized content
- **Student Call** option is always available.

During any activity (in case of some difficulties with task) student can call the teacher by pressing **Call** key.



IDL Digital Audio Active Comparative

IDL Digital is a versatile system for language learning that requires the use of a single computer workplace by teacher. Students' workplaces are equipped with a professional digital audio panels which provide stable and lasting-quality professional audio, ideal for enhancing communication and audio recording.

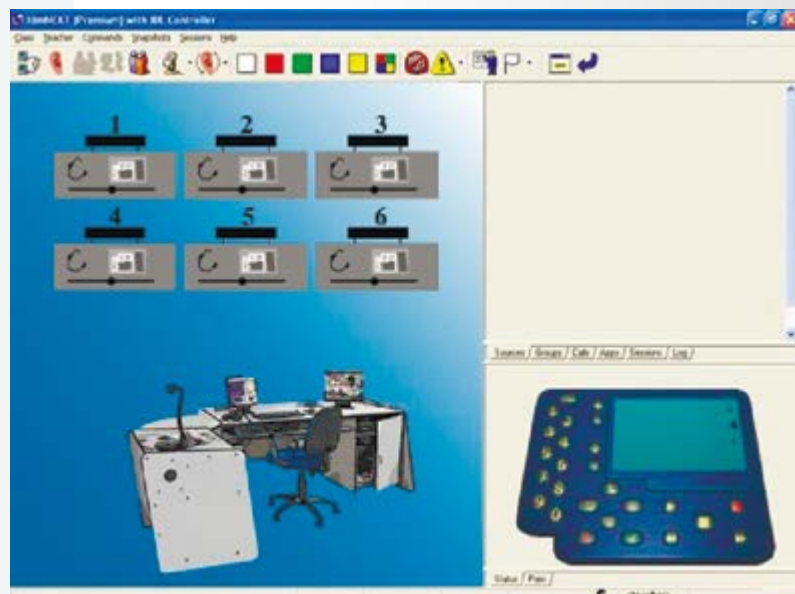
One main advantage of IDL Digital Language Lab is that teachers can **copy any file type** (audio, video, images or text) directly to **USB memory stick** connected to the student's **IDL Digital panels**, in order to assign tasks to be completed outside the language lab.

SIMPLE-TO-USE LANGUAGE LABORATORY

IDL Digital offers a pleasant means of communication, learning and student assessment.

The system, with its user-friendly interface, allows the teacher to create multiple classes without the worry of facing difficult tasks, because each type of activity is guided choice.

IDL Digital offers a wide variety of learning activities: reading practice, listening, comprehension and recording answers, pair work, conference, etc.



Classroom Software Control

LEARNING

IDL DIGITAL offers useful functions; students can load the audio tracks which teacher wants them to practice (several students can load the same or a different track and work independently).

Thanks to the USB connector built in to the audio panel, it is possible to transfer master and student tracks to a USB pen drive, or directly to MP3 player (when the teacher enables this function), so that students can continue to practice even outside the laboratory.

IDL Digital has been developed with digital recorder software to computer-emulate tactual external hardware and can be adapted for use **in existing computer classroom**



SESSIONS

IDL Digital bases its direction of activities on the concept of "sessions". The teacher chooses the activities, selects the students and starts the session by setting a time limit and comment. Both the instructor software and the student's audio panel LCD inform the student and teacher about the session in progress. When the session time limit is reached, the instructor software closes the session, and sends the teacher all the results.

With IDL Digital the teacher can monitor the whole class, communicate with the selected student or discretely listen student, pair or group of students without disturbing others.

Sessions in IDL Digital may include digital audio files from the instructor's PC or various external sources usable in real-time, such as MP3 player, CD, DVD, satellite, etc. Sending multimedia applications for practicing to students (one/group/all) teacher will be able to control these files any time (pause/stop/play/rewind or backward).

TEACHING

- Listening to an audio source
- Listening and comprehension exercises
- Talking /Speaking with or without recording on the student digital panel which has two separate master /student tracks
 - Reading Exercise
 - Pronunciation Exercise
 - Model Imitation
 - Simultaneous Translation
 - Consecutive Translation
 - Phone Conversation
 - Random Pair Work
 - Selected Pair Work
 - Sequential Pair Work
 - Oral Examination with or without recording
- Determined Conference with Tutor

Student learning process control

With IDL DIGITAL student performance can be evaluated with:

- Multiply choice quizzes
- True/False quizzes

When the students complete exam, automatically teacher receive back the answers with the statistic of exam and with possibility to export in HTML format ready to print out each exam and give back to the students with corrections.

Audio on Demand

This activity allows students to be independent working with files from list prepared by the teacher.

- Free audio track choice
- Student track saving on USB pen Drive or MP3 Player with home virtual recorder to continue practising at home

Using the video network (optional)

Listening to and watching an externally sourced video: DVD, satellite, teacher's PC, etc.

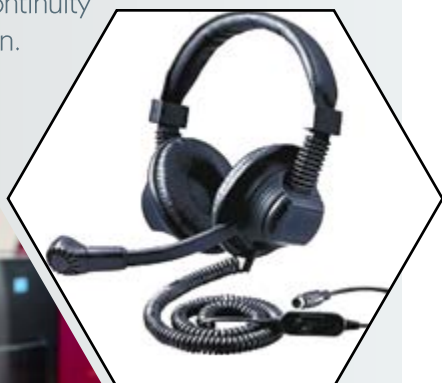


www.lainlab.com

HEADPHONE H-L2010

The headphone H-L2010 is professional product, which is hard wearing and show a high level of reliability to all those who study and work hard in the laboratory.

The headphone is full of clever devices which guarantee a working continuity and a smooth operation.



The headphone and its' accessories has been designed in order to be used in the laboratory with computerized equipment



STRUCTURAL CHARACTERISTICS

The inner structure is made of steel, while the outer structure is made of a strong gummy material. That is important because it guarantees the functioning time, even in the presence of any students mistreatments.

- Solid and strong appearance of the exterior
- Excellant volume bar controller to adjust the level of sound on the cable easily
- Connecting cable 200 cm length
- Replaceable earpads

FUNCTIONAL CHARACTERISTICS

- Fidelity
- A unidirectional microphonic sensor
- The ability to operate in an environment with a strong magnetic field
- A connection onto a multi pin socket giving a more durable working activity

- Loudspeaker diameter: 50mm
- Earphone sensibility: 112 dB \pm 3dB
- Impedance: 32 Ω \pm 10%
- Frequency range: 20-20KHz
- Output Power: 20mv
- Microphone sensibility: -56db \pm 2db

- Directivity: Unidirectional
- Cord Length: 2.0m
- Connector: 2X3.5mm plug
- With volume control bar on cable
- With gold plated plug
- Weight: 275g

FURNITURE

Workstation desks are an important element in the proposition of multimedia classroom because they must comply with needs of work, space and respect to design.

LAIN S.r.l. produces **Workstation** and **Master Console** desks which response requirements of educational institutions. The furniture produced by LAIN S.r.l. is very robust. The wood is covered with a layer of melamine anti-scratch and can be different colors by request.

The students desks can be: single or two-seat, with bulkhead or glass, with partition or without.

The compartment housing the cables and equipment are located below the work surface. **Teacher's desk** has a lockable compartment which can be placed on the left or on the right side.



Lain

www.lainlab.com

Via Statuto, 6 bis 12100, Cuneo, ITALY

+39.392.9385337

sales@lainlab.com